



258 Oak Tree Road, Tappan, NY 10983

info@telescript.com

201-767-6733

# Telescript's PTZ Mini Prompting System



## Assembly Instructions

telescript.com

# **IMPORTANT TELESCRIPT MONITOR MENU FUNCTIONS**

## **Mirror Mode Change**

Press MENU. Press DOWN once. Press INPUT 6 times to select Mirror Mode. Use the UP and DOWN buttons to cycle through the settings

## **No Signal Screen Color**

Press MENU. Press DOWN once. Press INPUT 3 times to select No Signal Screen. Use the UP and DOWN buttons to cycle through the settings.

## **Change Aspect Ratio**

Press MENU. Press INPUT 6 times to select Aspect Ratio. Use the UP and DOWN buttons to cycle through the settings

## **Change Backlight Intensity**

Press MENU. Press DOWN once. Press INPUT 5 times to select Backlight. Use the UP and DOWN buttons to adjust the intensity.

## **Auto Standby**

Your monitor is equipped with a STANDBY mode when there is a lack of signal to save power. To turn this On or Off:

Press MENU. Press DOWN once. Press INPUT 4 times to select Auto Standby. Use the UP and DOWN buttons to tur ON or OFF.

## **Brightness and Contract Adjustments**

Press MENU. Press INPUT to select the desired setting. Use the UP and DOWN buttons to adjust the setting

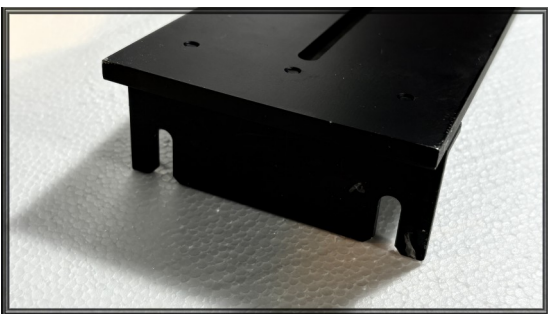
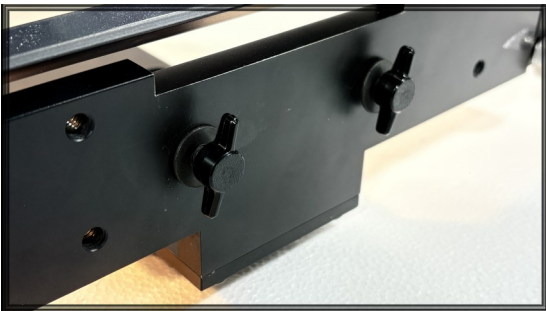
## **Parts List:**

- 1 - 15" IP Prompter Monitor (with power supply)
- 1 - Monitor Mount with Folding Frame & Beamsplitter
- 1 - PTZ Camera Mounting Plate
- 1 - Folding hood with mask
- 1 - Quick Adaptor (OPTIONAL ACCESSORY)
- 1 - Custom Travel Case (OPTIONAL ACCESSORY)



1. In order to mount your system you will need either a tripod with a 3/8 bolt on top, a tripod with a fluid head, or a Telescript Quick Adapter (optional). In this setup we will be using a lightweight fluid head.

First we need to remove the wedge plate from the head and attach it to the bottom of the folding hardware.



2. Flip the hardware right side up. On the back of the folding hardware you will see two thumb screws. Mount the PTZ camera plate to the back of the folding hardware by sliding the plate behind the thumb screws. Tighten the thumb screws.

3. Attach the hardware to the head.



4. Mount your PTZ camera to the camera plate by using the included 1/4-20 bolt.

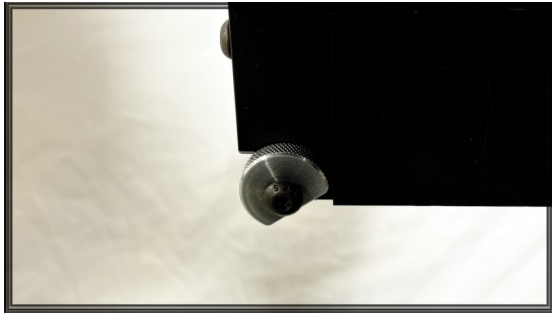


5. To insert the glass in the frame, remove the two small slotted screws located in the inside corner of the beamsplitter frame.

Remove the crossbar and slide the glass into the frame. Be sure you have the reflective side facing down (often marked by a small dot on the glass).

Replace the crossbar.

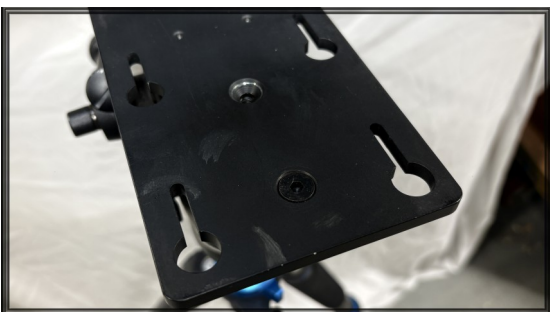




6. Push the glass frame to the upright position and lock the frame in place by turning the two lock knobs on the back of the back bracket.



7. Mount the hood by using the Velcro on both the inside edge of the hood and the edge of the glass frame. For the mask, slide the opening of the mask under the camera mounting plate and then over the camera. Then use the Velcro on the edge of the mask to attach to the edge of the hood. Tighten the drawstring to close the opening.



7. Your system may have shipped with the monitor mounted to the folding hardware. If it did not, or you have removed it, mount the monitor. Make sure the 4 small thumb screws are threaded into the 75mm holes on the bottom of the monitor and sit them into the keyholes on the monitor mounting plate. Slide the monitor all the way back and tighten the thumb screws.



Your system is now complete. Power and test.

**NOTES:**

- A) Your 15" monitors come with IP video capability via NDI. Please refer to the NDI Monitor Manual that came with your kit to get details on how to use this interface
- B) If you are using our Quick Adapter to mount the system to a tripod, screw the receiver onto the 3/8 bolt on top of the tripod, and attach the nipple to the bottom of the monitor mounting plate. There is a recessed hole in the plate, in the center, where you can insert the small retaining bolt. Once tight, you can now insert the nipple into the receiver on the tripod.
- C) If for some reason you require your PTZ camera to be higher, reach out to Telescript and ask about our 2" Riser Block.